

# Basic Tutorials Series:

## Import A Photograph

RenoWorks Support Team

Document #HWPRO0003

# 1 Import Your Own Photograph

## The Photo Import Wizard

The Photo Import Wizard is the first tool you will use in your software. It is a six stage process that is designed to prepare your photo for masking, thus reducing the need for a separate photo editor.

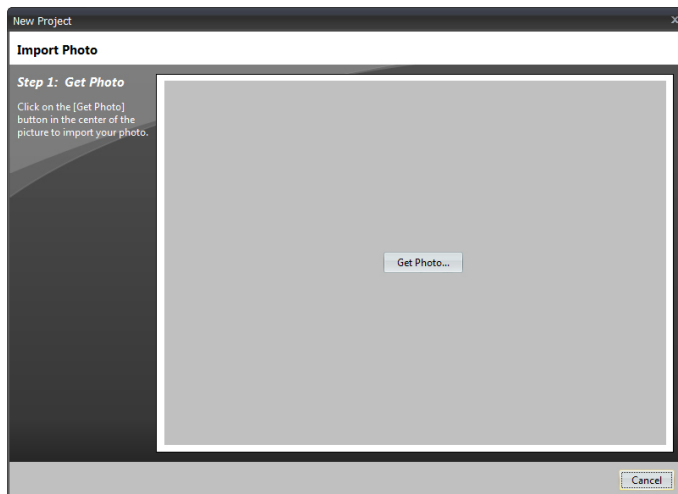
Photos can be in either JPG, PNG, or BMP format, and can have any aspect ratio, from a standard portrait to a panoramic photo.

In general, a bright, clear, straight-on photo of your home from a digital camera works the best, and is easiest to mask. If you do not have access to a digital camera, you can scan in a print image at high resolution.

It is important to realize that you cannot remove foreground objects from your photograph! If there is a tree, car, person or telephone pole in the original photo it is there to stay, and cannot be removed using our software.



**REMEMBER:** *Good projects come from good photos.*



## How To Import Your Own Photograph

### 1. Open up the Photo Import Wizard

- a. Click on the **Main Menu Button**
- b. Click on “New...”

### 2. Browse for your photo

- a. Click on the “**Get Photo**” button
- b. Navigate to where the photo is saved on your computer
- c. Click **once** on the file you would like to open
- d. Press “**Open**”

### 3. Straighten your photo

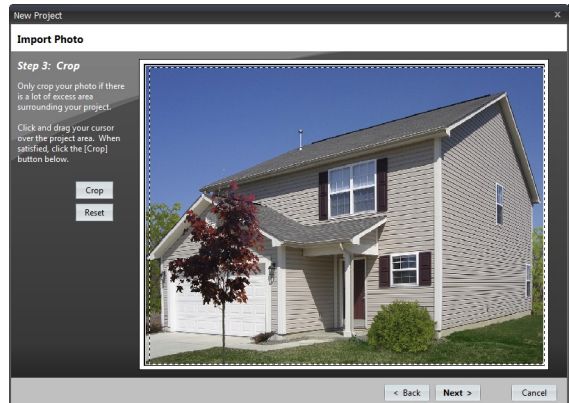
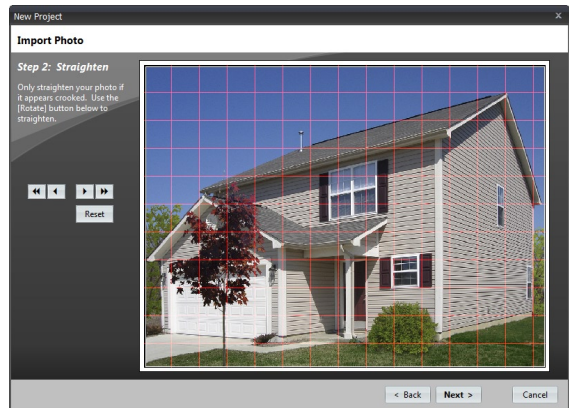
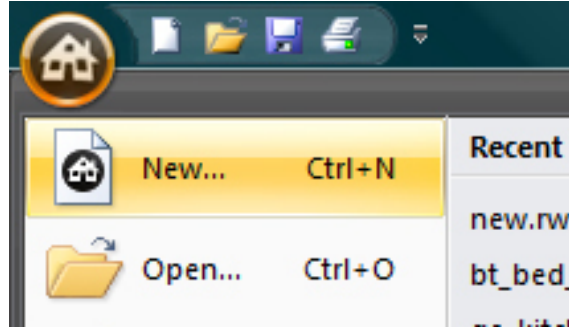
If your picture is not perfectly level, there is no need to re-photograph it. This straightening tool allows you to rotate the photo to achieve the desired levelness of your photo.

- a. Use the “<<” and “>>” buttons if your photo is very skewed
- b. Use the “<” and “>” buttons if your photo only needs minor adjustments
- c. Press “**Reset**” if you make a mistake and would like to restore the default photo rotation
- d. Press “**Next >**” to continue

### 4. Crop your photo

If you would like to eliminate excess area surrounding your project use the crop feature.

- a. Click at the top left area that you would like to crop and drag a box down and to the right.
- b. Re-adjust by dragging a new box if the first one looks incorrect.
- c. Click once on the “**Crop**” button



- d. Press “Reset” if you make a mistake and would like to restore the default photo
- e. Press “Next ►” to continue

## 5. Adjust Brightness and Contrast

- a. **Brightness:** This is how dark or light the photograph looks overall.

If the photo looks too dark, move the brightness slider to the right to lighten the image. If the photo is too light, move the brightness slider to the left to darken the image.

- b. **Contrast:** This is how much difference there is between the light and dark areas of your photograph. It is generally best to nudge the contrast up just a little bit, as it makes the darks darker and the lights lighter. This makes the edges of your photo a bit more defined, and allows for easier masking.

Moving the slider to the right increases the contrast of your photo, and moving the slider to the left decreases the contrast of your photo.

- c. Press “Reset” if you make a mistake and would like to restore the default photo
- d. Press “Next ►” to continue

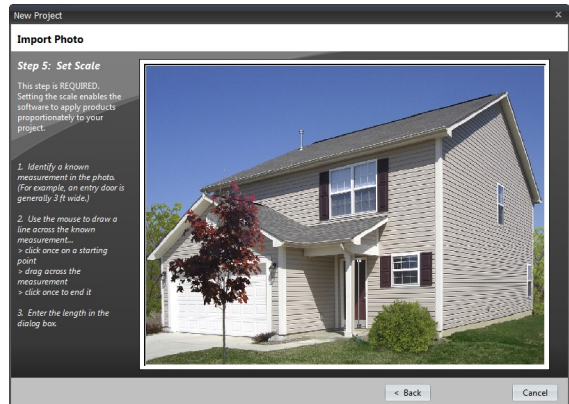
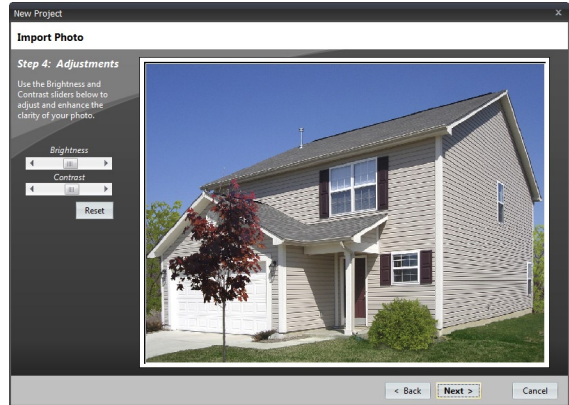
## 6. Set Scale

This is a **required step** that tells the software how large or small to make products appear on your home.

If you have an exterior photo, the easiest way to set the scale is to use your front entry door, or a garage door as a reference since these items have very standardized sizes.

If you have an interior photo, you can set the width of an interior door, or you can actually measure the height of a window or height of a wall, as most interiors don't have any standard size objects.

- a. Click **once** on the middle of the top edge of the door
- b. Drag your mouse down to the middle of the bottom edge of the door



- c. Click a second time
- d. Enter one of the following dimensions into the dialogue box that pops up:
  - i. Set the height of an **entry door** at: **6 feet 8 inches**
  - ii. Set the height of a **garage door** at: **7 feet**
  - iii. Set the width of an **interior door** at: **3 feet**
  - iv. Or input the **custom measurement** that you have taken for your interior
- e. Press “**Apply**”
- f. Click on “**Next >**” button

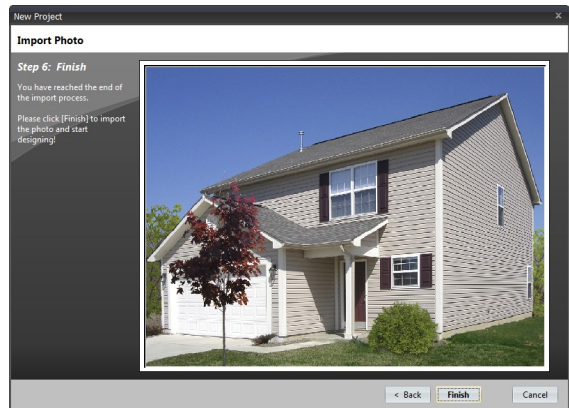


*NOTE: The larger the distance you measure, the more accurate your scale will be – for example, use the height of a door rather than the width. As well, the scale can be changed at any time if products do not look in proportion to your home.*

## 7. Start Designing!

You have now successfully prepared your image for masking!

- a. If you do not like the image that is currently showing in the import wizard dialogue box, please click on the “< **Back**” button to refine the image.
- b. Otherwise, click on the “**Finish**” button to start your project.



## 8. Save your project

- a. You will now be prompted to save your project. Please choose a name for your project and save the file. You can choose to save the file in the default folder, or you can save the file to an alternate location on your hard drive.



*REMEMBER: Save your project often during the design process to prevent losing your work!*